

# HELP INSPIRE SUNDERLAND'S VISION FOR LOW CARBON HOMES OF THE FUTURE

## RESOURCE PACK TWO

Historic photographs,  
archive images and historic  
maps

Find out more:

[www.mobie.org.uk](http://www.mobie.org.uk)

[www.riversidesunderland.com](http://www.riversidesunderland.com)

[www.cti-timber.org](http://www.cti-timber.org)



**RIVERSIDE  
SUNDERLAND**  
UNIVERSITY DESIGN CHALLENGE

**MOBIE**  
Ministry of Building  
Innovation and Education

**Sunderland**  
City Council

**Confederation**  
of Timber  
Industries

**List of images as they appear in order**

1928 Lambton and Hetton Staiths, Sunderland

1928 Lambton and Hetton Staiths, Sunderland

1928 Lambton and Hetton Staiths, Sunderland

1928 The Wearmouth Bridge and Lambton and Hetton Staiths, Sunderland, from the east

1936 Wearmouth Bridge and environs, Sunderland

1946 The River Wear, the Wearmouth Colliery and the surrounding industrial area, Sunderland

1949 SS Denis (2) and assisting tugs on the River Wear by Wearmouth Bridge and Monkwearmouth Brewery, Monkwearmouth

1949 The Vaux and Associated Breweries Ltd Brewery on Castle Street, Garrison Field, and Wearmouth Bridge, Sunderland,

1949 The Vaux and Associated Breweries Ltd Brewery on Castle Street, Garrison Field, and Wearmouth Colliery, Sunderland

1949 The Vaux and Associated Breweries Ltd Brewery on Castle Street, Garrison Field, and Wearmouth Colliery, Sunderland, closeup

1949 Vaux and Associated Breweries Ltd Brewery, Garrison Field and Wearmouth Bridge, Sunderland

1949 Vaux and Associated Breweries Ltd Brewery, Garrison Field and Wearmouth Bridge, Sunderland, closeup

Hartleys Glass Works

Hetton Staithes (to left)

Hetton Staithes

1910 Lambton and Hetton Staithes

Lambton Coal Drops

1800s River Wear - View East

1820s River Wear - View West

River Wear and Banks

1885 Sunderland

1949-1969, OS 1-10,560

1892-1914, OS 25 Inch

1885-1900, OS One Inch – Outline

1888-1913, OS Six Inch



















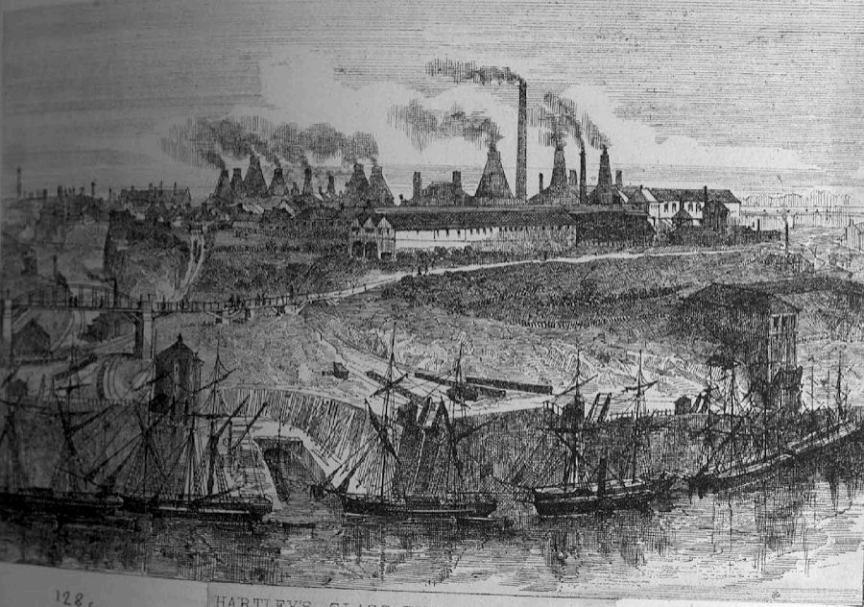






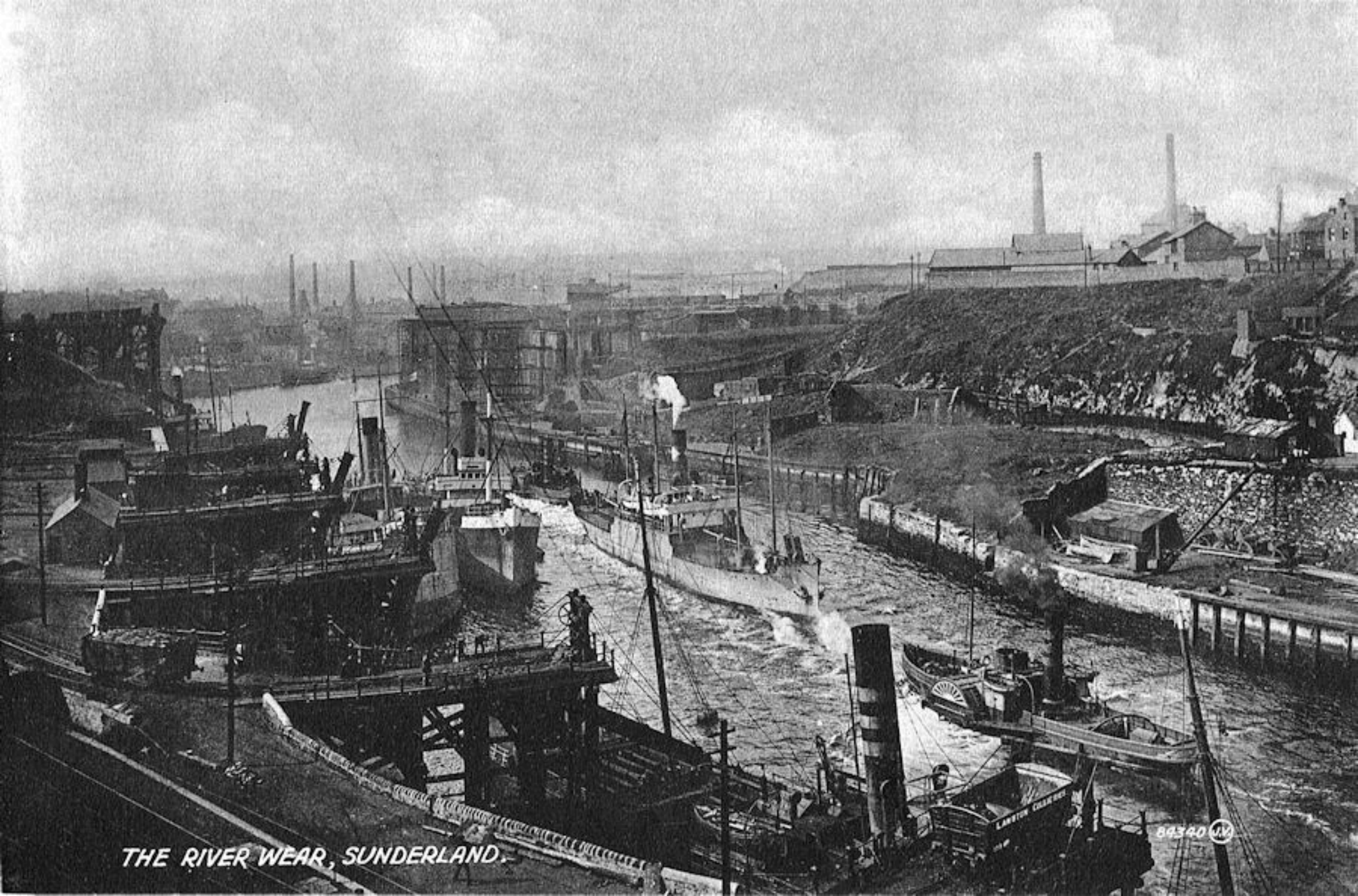






HARTLEY'S GLASS WORKS, SUNDERLAND.

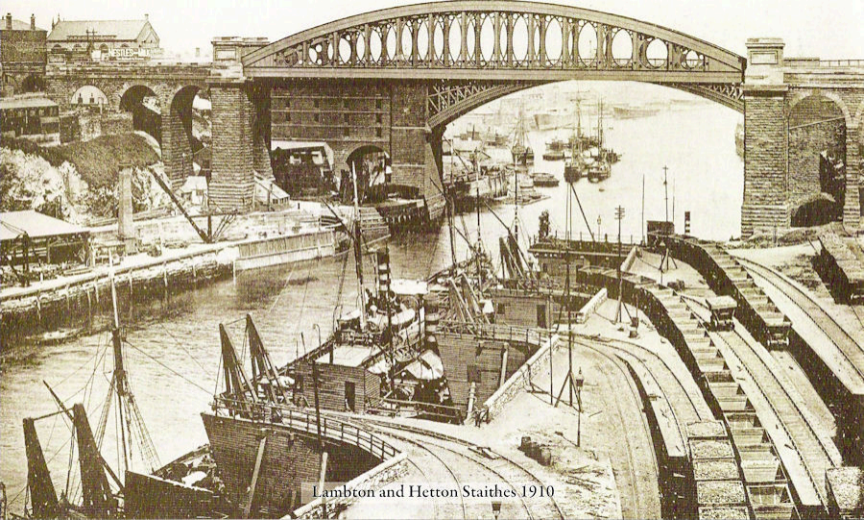




*THE RIVER WEAR, SUNDERLAND.*

84340 (14)





Lambton and Hetton Staithes 1910



**BRAMISH**

OF ANIMATED FILMS

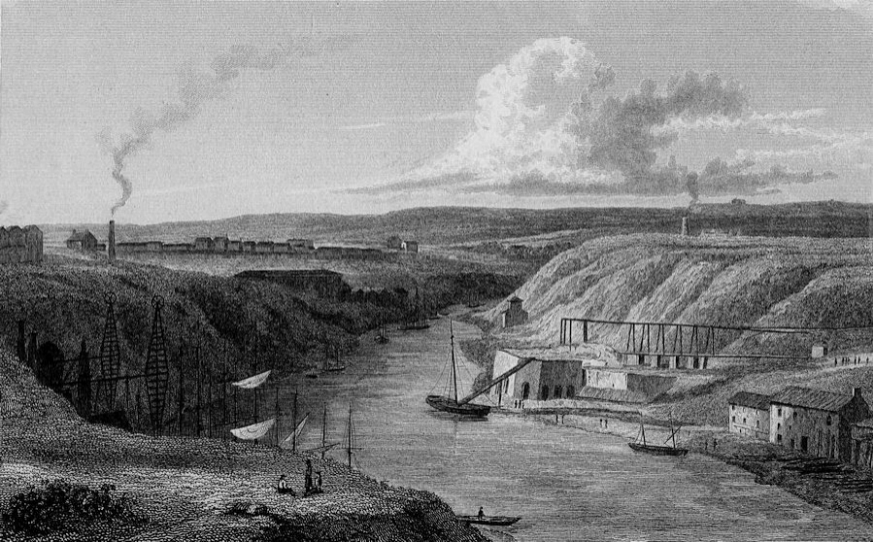




J. Allan

W. Le Poite

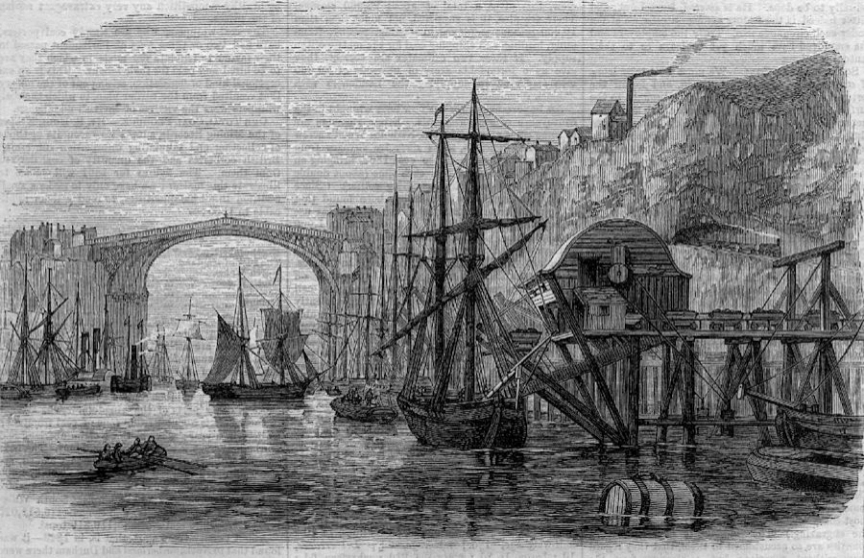
SUNDERLAND, COUNTY OF DURHAM.



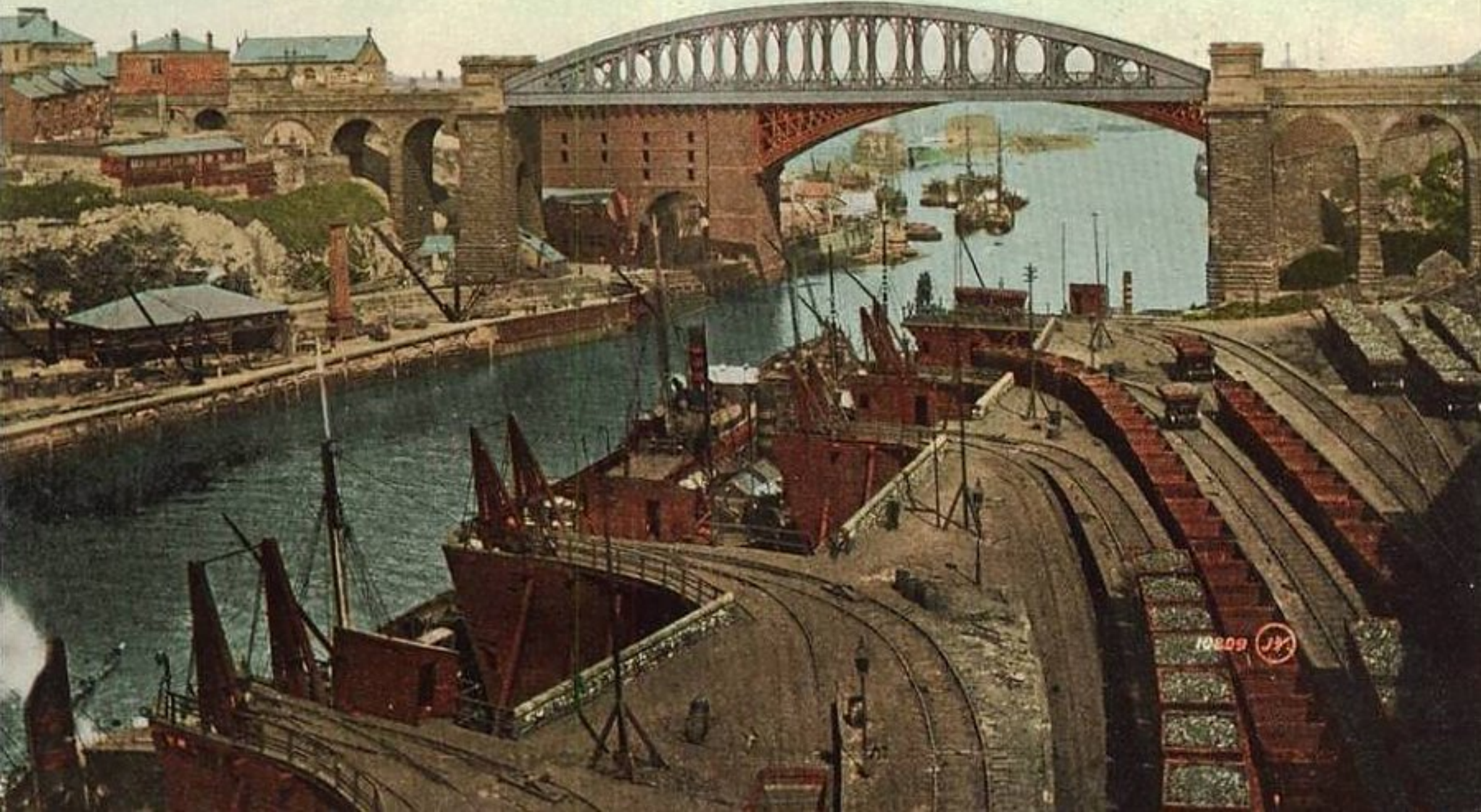
The River Wear and Banks, Sunderland.







*Sunderland Bridge and Lambton Coal Drops*



10809 JY



Cannon found  
AD 1909.

50 m





+

-



50 m

NZ 39297 57562  
439297, 557562  
54.9112, -1.3886  
54° 54' 41" N 1° 23' 19" W



Darmouth Drops

Timber Yard  
Pottery

Lambton Drops

DOCK

FONTAINE RD.

GILL BRIDGE AVENUE  
LIVINGSTONE ROAD

Drill Hall

Baths

115.2

Sch

Tunnel

Cemetery (Disused)  
Schools

306

71.9

97.6

West B

BRIDGE STREET

STATION ST

50 m