

HELP INSPIRE SUNDERLAND'S VISION FOR LOW CARBON HOMES OF THE FUTURE

RESOURCE PACK THREE

Site photographs including
Galleys Gill

Find out more:

www.mobie.org.uk

www.riversidesunderland.com

www.cti-timber.org



**RIVERSIDE
SUNDERLAND**
UNIVERSITY DESIGN CHALLENGE

MOBIE
Ministry of Building
Innovation and Education

Sunderland
City Council

**Confederation
of Timber
Industries**



















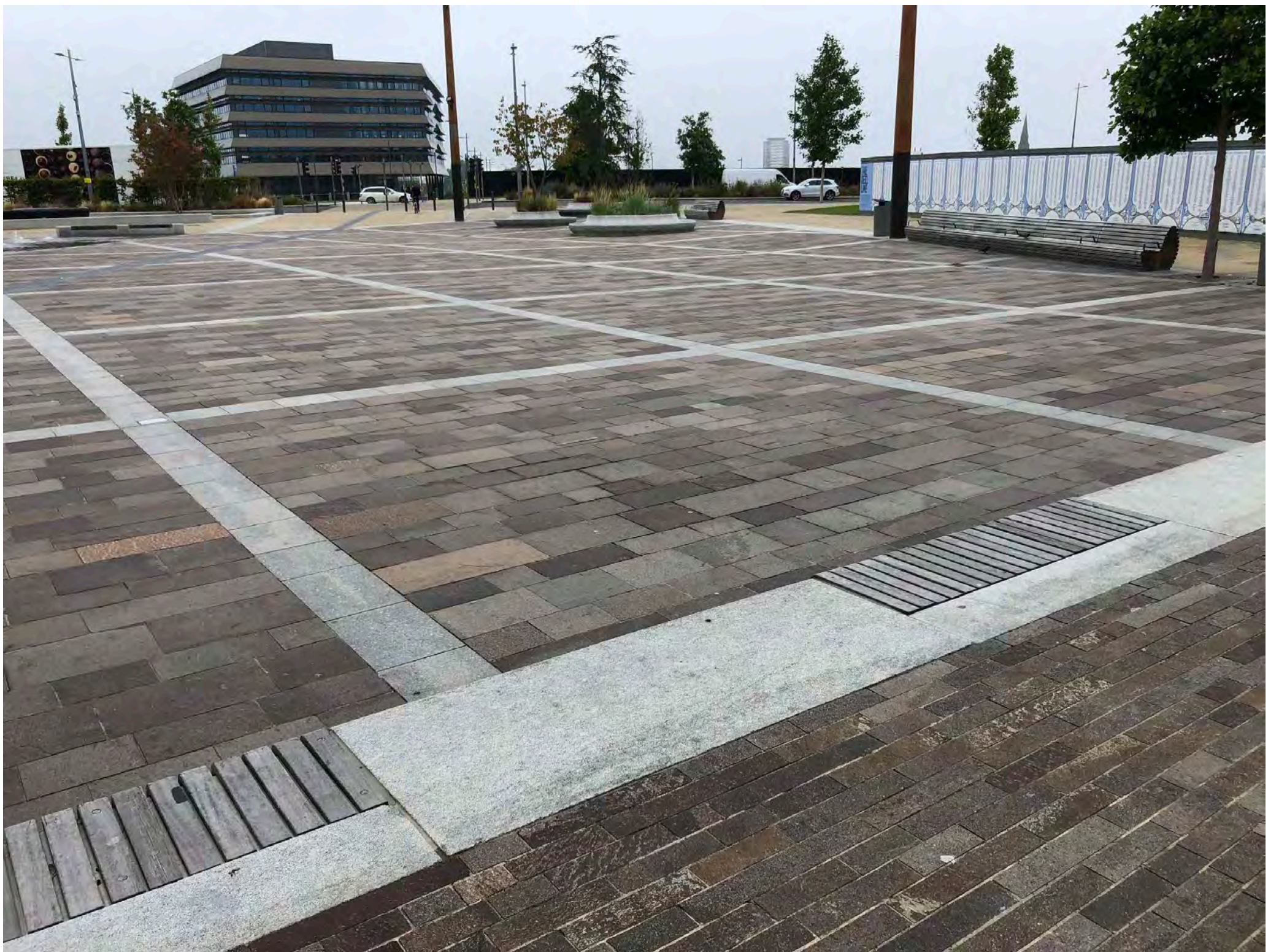










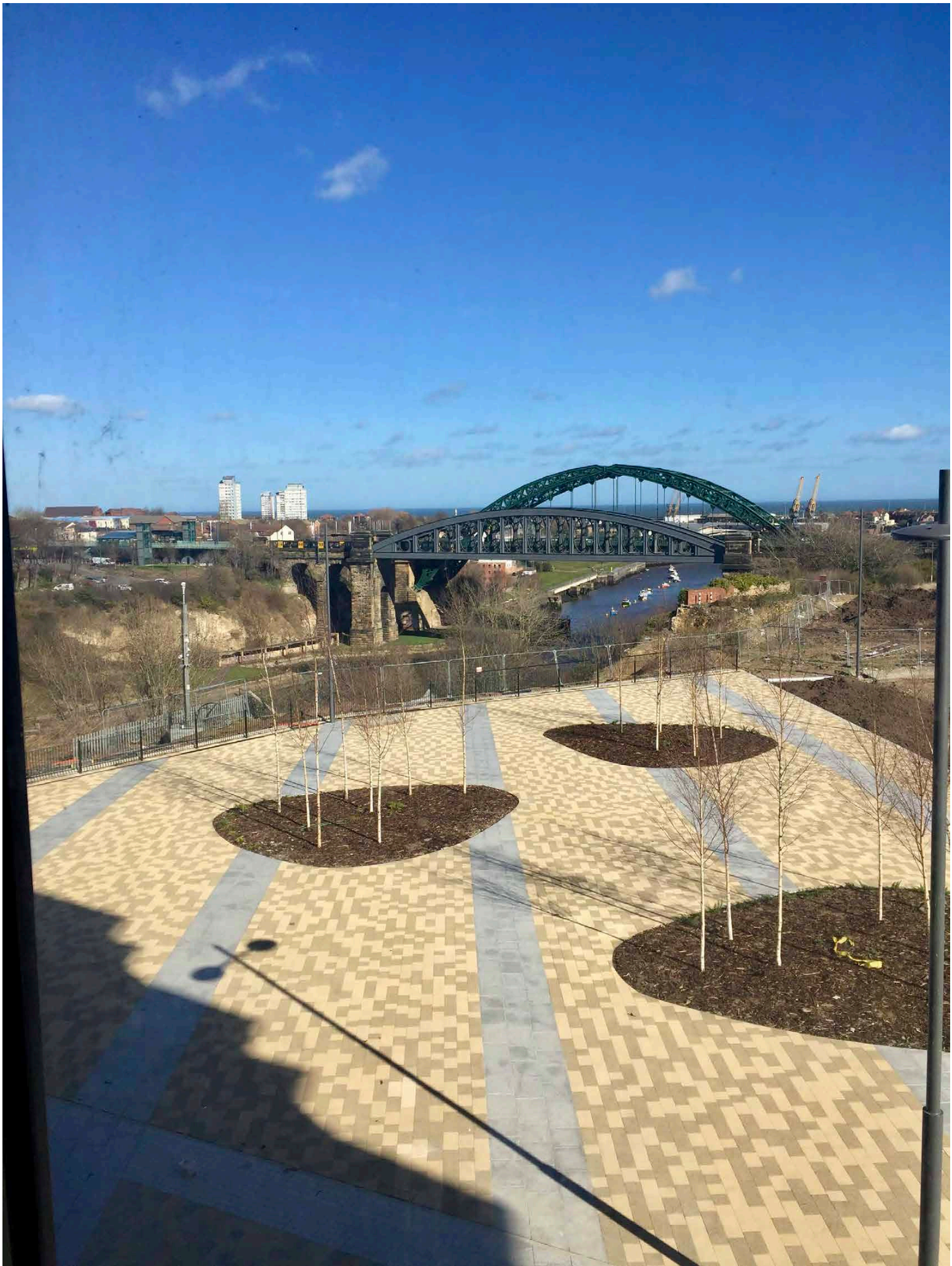






































Large stylized graffiti letters, possibly spelling "GAL" or "GAL", with red and white colors and black outlines. The letters are decorated with various tags and symbols, including the word "KIRCH!" and other illegible markings.

White graffiti tags, including the word "HELL" and "TRAK", painted on the upper part of the wall.

Large white graffiti tags, including the names "Soenie" and "Alliah", painted on the right side of the wall.

























